

This Medicines Information Leaflet is produced locally to optimise the use of medicines by encouraging prescribing that is safe, clinically appropriate and cost-effective to the NHS.

Management of superficial thrombophlebitis (excluding pregnancy and the puerperium)

Superficial thrombophlebitis (STP) is a term used to describe venous thrombosis, and the associated inflammation, of the superficial veins. It is 6 times more common than deep vein thrombosis (DVT). Whilst once considered benign and self-limiting, more recent evidence has shown that:

- (i) STP within 3cm of the deep venous system of the thigh i.e. at the saphenofemoral junction (SFJ) has a much higher risk than previously recognised for development of DVT.
- (ii) intermediate doses of anticoagulation provide better symptomatic relief for moderate risk STP patients than non-steroidal therapy (see below for risk stratification).

Risk of venous thromboembolism (VTE) in patients with STP

Reported rates for the development of DVT and pulmonary embolus (PE) in patients who initially present with STP that is greater than 5cm in length are reported to be 2.8% and 0.4% respectively. These figures come from the largest study to look at this risk where notably 90% of the cohort received some form of anticoagulation (low dose low molecular weight heparin (LMWH) or a vitamin K antagonist) for between 11 – 81 days.

Risk factors for the development of VTE after STP or extension/recurrence of a segment of STP include male gender, previous history of VTE, previous or active cancer and thrombophlebitis not associated with varicose veins. (Each risk factor confers a doubling of risk for VTE development).

Recurrent superficial thrombosis in different sites (migratory thrombophlebitis) should prompt consideration of a diagnosis of a paraneoplastic phenomenon, where the most likely underlying condition is pancreatic cancer.

How to manage patients presenting with lower limb STP

The most common presenting features for STP include a tender 'cord-like' vein, and pain, itching and erythema along the course of the affected vein. There are no scoring systems to aid diagnosis of STP. D-dimer is not useful in the diagnosis of isolated STP.

STP may be diagnosed on clinical grounds alone, however, ultrasound may also be used – particularly as it is becoming increasingly recognised that DVT may also be present. Between 20-25% of patients with STP have a concomitant DVT at the time of diagnostic ultrasound examination. A concomitant DVT is much more likely to be present if the STP involves the perforating veins or is within 3 cm of the SFJ.

Use the flow charts in Appendix 1 and 2 to guide STP management and select the most appropriate anticoagulant.

Treatment for STP

STP less than 5 cm and not within 3cm SFJ

Use oral or topical non-steroidal medications (NSAIDs) for symptomatic relief. If symptoms remain at 1 week or if there are progressive symptoms, consider re-scanning.

STP more than 5cm and not within 3cm SFJ

These patients may be managed with 45 days of one of the following treatments:

- Subcutaneous fondaparinux 2.5 mg once daily
- Subcutaneous dalteparin 125 units/kg once daily
- Oral rivaroxaban 10 mg once daily

Refer to appendix 1 for further information to help guide most suitable treatment option.

Patients within this group in whom the treatments are likely to provide the most benefit include those with:

above knee STP; active cancer; recent surgery; previous history of VTE and STP of the long saphenous vein.

Renal impairment: The dose of fondaparinux should be reduced to 1.5mg once daily if the CrCl is 20-50ml/min and is contraindicated if CrCl is less than 20ml/min. For dalteparin, if CrCl is less than 20ml/min, contact the haemostasis registrar for further advice on bleep 5529. Rivaroxaban is contraindicated if the creatinine clearance (CrCl) is below 15ml/min; consider use with caution if the CrCl is 15-30ml/min.

Fondaparinux is the preferred management option. The prescribing of dalteparin and rivaroxaban in this setting are off-label.

High risk STP:

If the STP is within 3cm of the Sapheno Femoral junction (SFJ), patients should be treated with 3 months of full dose anticoagulation, as [per the VTE guidance](#).

Therapeutic anticoagulation is not routinely offered to patients with STP within 3cm of the Sapheno Popliteal Junction (SPJ) due to lack of evidence of known benefit.

Additional management for all STP patients

Routine follow up at the thrombosis clinic is not required for isolated STP. However those with high risk superficial vein thrombosis i.e. superficial vein thrombosis within 3cm of SFJ accompanied by significant thrombotic risk factors, such as active malignancy, may require discussion with haematology to assess the appropriateness of extended anticoagulation therapy and the need for review.

Recurrent STP

The risk of recurrence of STP is 5-10% per year, and recurrence is most likely to occur at the same primary site, although there is a 4% risk of subsequent DVT/PE (as per the ICARO study). Surgical management of recurrent STP may be helpful in some cases and assessment by the vascular team for chronic venous insufficiency is recommended, with treatment as appropriate.

Upper limb thrombophlebitis

Thrombosis of the cephalic, antecubital and basilic veins are managed as STP. In most cases, upper limb STP can be managed with NSAIDs. If symptoms of STP worsen consider a repeat scan to exclude DVT. If upper limb STP is extensive or above the elbow, treatment with anticoagulation – as per 'STP more than 5cm and not within 3cm of the SFJ' section above, should be prescribed.

Safe prescribing points

- NSAIDs are given in this setting to treat symptoms only and they do not alter the natural history of the condition. For more details on prescribing NSAIDs, refer to the [MIL 'Oral NSAIDs Prescribing Key Points'](#)
- Please remember to inform nursing staff with regards to any changes in prescriptions.

References

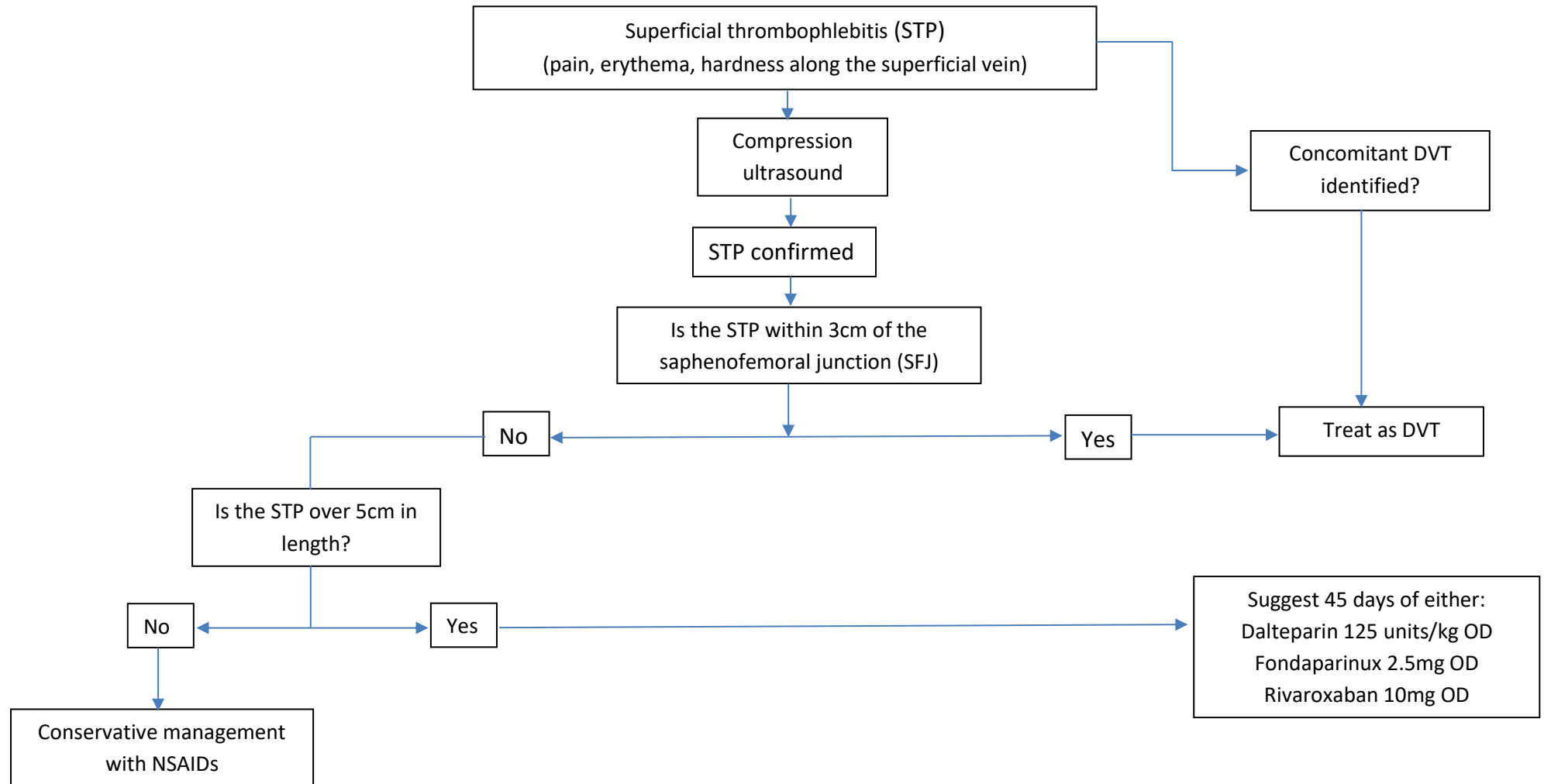
1. Superficial vein thrombosis: a current approach to management. *Scott, S, Mahdi AJ, Alikhan R.* British Journal of Haematology, 2015, 168, 639-645.
2. Superficial venous thrombosis and venous thromboembolism: a large prospective epidemiological study. *Decousus H, et al.* Annals of Internal Medicine, 2010, 152, 218 – 224.
3. Fondaparinux for the treatment of superficial-vein thrombosis in the legs. *Decousus H, et al.* N Engl J Med, 2010, 363, 1222-1232.
4. A randomized double-blind study of low-molecular-weight heparin (parnaparin) for superficial vein thrombosis: STEFLUX (Superficial ThromboEmbolism and Fluxum). *Cosmi B, et al.* J Thromb Haemost. 2012, 10(6), 1026-1035.
5. Prevention of thromboembolic complications in patients with superficial-vein thrombosis given rivaroxaban or fondaparinux: the open-label, randomised, non-inferiority SURPRISE phase 3b trial. *Beyer-Westendorf, J., et al.* Lancet, 2017, Haematol. 4(3) e105-e113.
6. Barco, S., Pomeroy, F., Di Minno, M.N.D., et al. (2017) Clinical course of patients with symptomatic isolated superficial vein thrombosis: the ICARO follow-up study. Journal of Thrombosis and Haemostasis 15(11), 2176-2183.

Prepared by:

Kirollos Kamel and Susan Shapiro, Consultant Haematologists, Gurpreet Bahra, Specialist Anticoagulation & Thrombosis Pharmacist, Vicki McDonnell, Lead Anticoagulation & Thrombosis Pharmacist and Lucy Wood, Senior Thrombosis Nurse.

Review date: July 2028

Appendix 1: Algorithm to outline process for the identification and management of STP



Appendix 2: Algorithm to aid selection of suitable anticoagulant for patients with STP more than 5cm in length and not within 3cm of SFJ